

HST

Automotive



FORGING APPLICATIONS FOR THE RAILWAY INDUSTRY



ABOUT US



HST, established in 2005, specializes in closed die forging, ring rolling, and specialized production methods. With state-of-the-art facilities, the company has an annual forging capacity of 10,000 tons of steel, serving industries such as railway, automotive, and defense.

The manufacturing facility spans 8,000 square meters and operates three shifts per day. In the material cutting section, materials with cross-sections of Ø40-80mm are processed using crushing shears, while saw cutting machines handle cross-sections ranging from Ø38-200mm and 50-110mm.

The production lines include four forging lines, one head inflation line, and one ring rolling line. Automatic feeding is facilitated by vibrating feeders, and raw materials are heated using induction heating systems for square and round sections up to 40-120mm, as well as natural gas furnaces for larger sections.

The facility utilizes forging hammers from 2.6 to 10 tons, mechanical presses ranging from 80 to 500 tons, and hydraulic presses from 100 to 300 tons for metal forming. The forging lines support mass production for components weighing between 0.5 kg and 23 kg.

Mission

HST attaches great importance to technological development, quality and environmental sensitiveness and adopts as a principle to provide product deliveries which are above the market expectations, on time and with competitive conditions.

Vision

Technical power and production capacity of HST makes it one of the largest plants of its kind in the world. HST wants to keep its leading position in gear systems production among the world class companies.

HST aims full customer and employee satisfaction.



PRODUCTS

HST

Automotive

FIXED POINT HOUSING

Located on the wagon chassis, it is used to dampen vibrations and balance forces during operation.



DRAW ROD JOINT

It is a lower component of the wagon braking system.



1500 kN DRAW SPINDLE M60x6 ROUND THREAD

Component used for force transmission in train mechanical systems



SUPPORT PLATE STOP PLATE

Wagon connection part where the elastomeric draw gear assembly is mounted



PRODUCTS

HST

Automotive

EYED DRAW HOOK (1350 kN)

Part used to transmit force between the draw gear assembly and the screw coupling.



EYED DRAW HOOK (100 Ton)

Part used to transmit force between the draw gear assembly and the screw coupling.



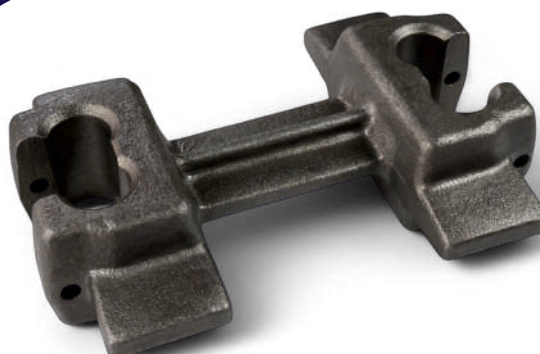
BALL-END DRAW HOOK (850 kN)

Part used to transmit force between the draw gear assembly and the screw coupling.



AXLE BOX GUIDE (MENOT)

Sub-component of the wagon wheel set assembly.



PRODUCTS

HST

Automotive

BRAKE LEVER BRIDGE

Sub-component of the bogie braking system.



SEMI-AUTOMATIC SCREW COUPLING

(850 kN) Mechanical system connected to the railway vehicle's draw hook, used for length adjustment.



AUTOMATIC SCREW COUPLING

(1350 kN) Mechanical system connected to the railway vehicle's draw hook, used for length adjustment.



DRAW GEAR ASSEMBLY WITH ELASTOMER SPRINGS

TS/EN 15566:2009 +A1 2010 1
MN TYPE 540 1.5 MN TYPE 540
A system fixed to the railway vehicle, comprising mechanical parts and a damping element, operating under tensile (draw) forces.



PRODUCTS

HST

Automotive

BUFFER(620 mm LENGTH) WITH ELASTOMER SPRINGS

TS/EN 15551:2009 +A1 2010 R2750 105
mm A CATEGORY 600 kN / W=32 kJ
Mechanical system fixed to the railway
vehicle, comprising mechanical parts
and a damping element, providing
cushioning during impact.



DRAW GEAR ASSEMBLY WITH FRICTION SPRINGS

TYPE 540 600 kN / W=20kJ
A system fixed to the railway
vehicle, comprising
mechanical parts, operating
under tensile (draw) forces.



DRAW GEAR ASSEMBLY WITH FRICTION SPRINGS

TYPE 570 600 kN / W=20kJ
A system fixed to the
railway vehicle, comprising
mechanical parts, operating
under tensile (draw) forces.



FRICTION SPRING STACK FOR FREIGHT WAGON BUFFER

75mm Stroke / W=12 kJ-34MPa
Complete mechanical assembly
located inside the buffer casings
on railway vehicles, providing
damping during impact.



PRODUCTS

HST

Automotive

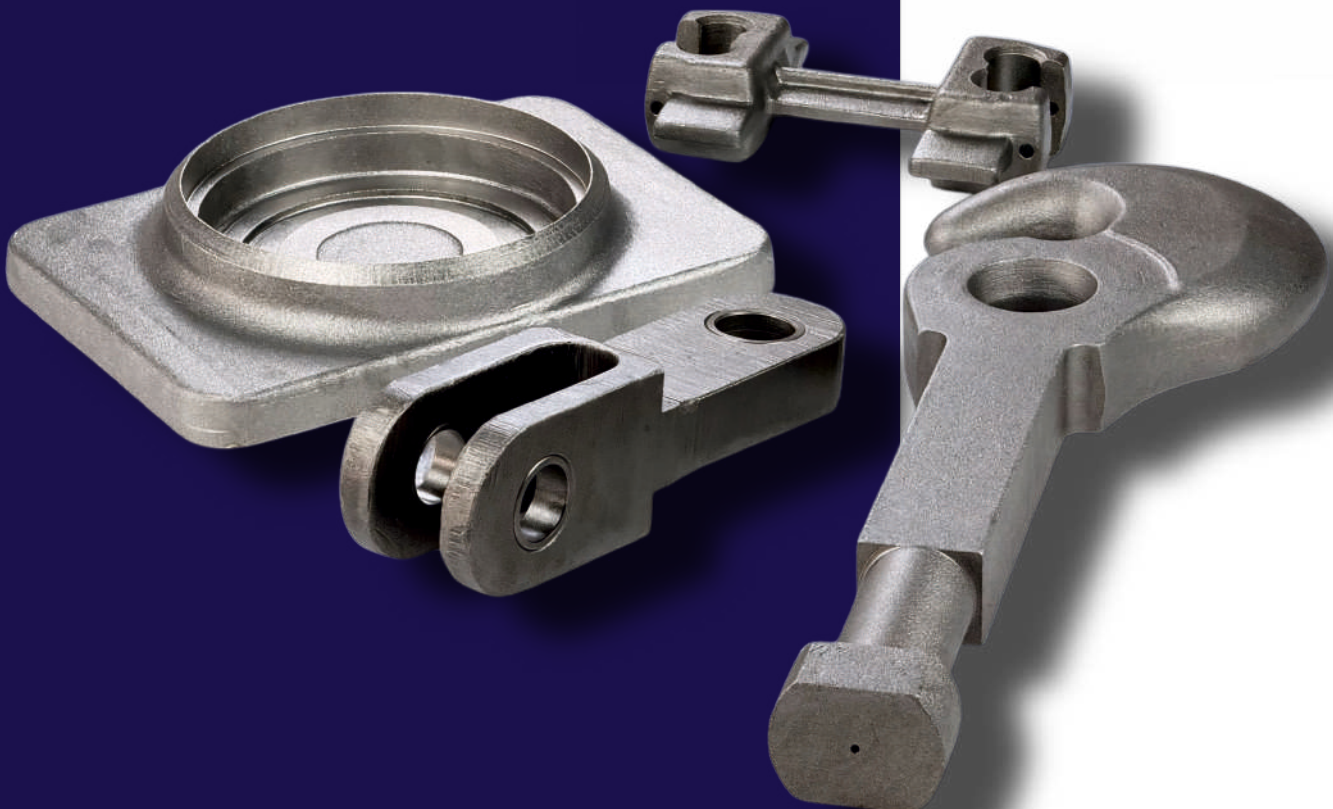
FRICTION SPRING STACK FOR PASSENGER WAGON BUFFER

For 650 mm length buffer 110mm Stroke / $W=15 \text{ kJ}-33.4 \text{ MPa}$
Complete mechanical assembly located inside the buffer casings on railway vehicles, providing damping during impact.



FRICTION SPRING STACK FOR SUPER BUFFER

For 620 mm length A Category buffer 105mm Stroke / $W=32 \text{ kJ}$
Complete mechanical assembly located inside the buffer casings on railway vehicles, providing damping during impact.



GEAR SHAFT FORGINGS

HST

Automotive

UNIVERSAL JOINT CROSS FORGING BLANK

The forged spider is used in differentials



COUPLING FORGING BLANK

Coupling forging blank pto driven gear



COUNTERSHAFT FORGING BLANK

MF Transmission
Countershaft



AXLE GEAR / SIDE GEAR FORGING BLANK

Pre-machined forged part used in differential gear systems



GEAR SHAFT FORGINGS

HST
Automotive

COUNTERSHAFT FORGING BLANK

Transmission Countershaft



CROWN WHEEL FORGING BLANK

Bevel Pinion Gear Forging
Blank



BEVEL PINION GEAR FORGING BLANK

Used in Differential
Assemblies



BEVEL PINION GEAR FORGING BLANK

Used in Differential
Assemblies

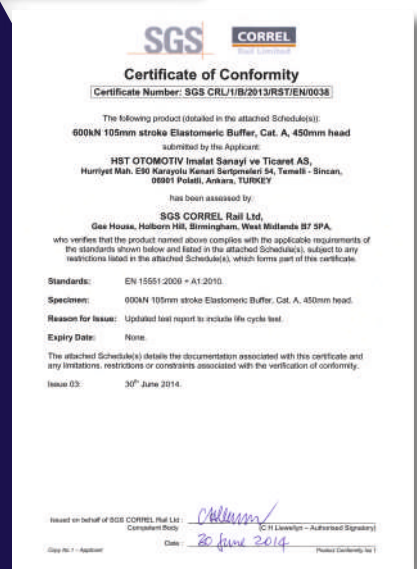
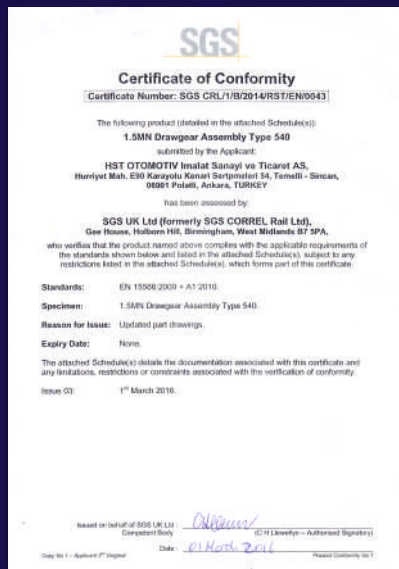


HST

Automotive



CERTIFICATIONS HST Automotive



HST

Automotive



www.hstotomotiv.com.tr



satis@hstotomotiv.com.tr



+90 312 646 50 50



Cumhuriyet Mahallesi
E-90 Karayolu Kenarı
Serpimleri No:54,
Temelli-Sincan/Ankara
TÜRKİYE

